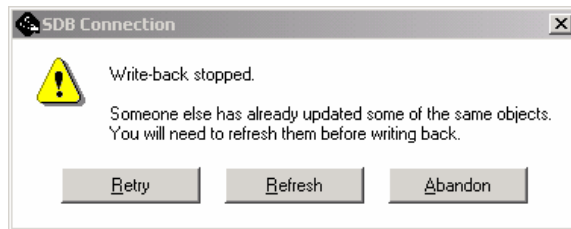


If a message similar to this appears



Message 1

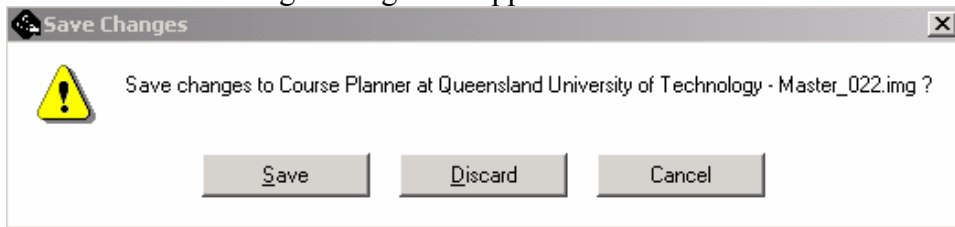
1. Click on the Retry button.
2. Click on the **WB** button again.

If the writeback works, then ignore the rest of this instruction.

However . . . if Message 1 reappears then follow these exact steps:

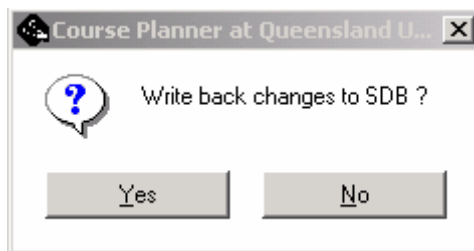
- A. Click on the Abandon button
- B. Click on the File menu
- C. Select the Exit option.

The following message will appear.



Message 2

- D. Click on the Discard button.
The following message will appear.



Message 3

- E. Click on the No button.
You will be disconnected from Syllabus Plus.
- F. Log in again.
- G. The WB button should now be inactive (grey), and you can continue working.

However . . . if the WB button is active (black) and if Message 1 reappears when you click on it, then you must load a new image immediately.

.oOo.